

Socket Cordless 56K Modem

with Bluetooth® Wireless Technology

Cable-free Internet Access from your Mobile Computer

Why sit at a desk when you can check email and browse the Web while lounging around in bed? Socket's Cordless 56K Modem with Bluetooth® Wireless Technology lets you comfortably access the Internet from your Pocket PC, Palm PDA, Windows notebook or Tablet PC without any cables tying you down.



Cellular coverage isn't ubiquitous, and not all hotels have LAN or Wi-Fi, but virtually every place you go will have telephone access. The Socket Cordless 56K Modem is great for business travelers who need a reliable solution for Internet access and don't want to worry about LAN/Wi-Fi availability. Plus, the modem avoids the hassles of spotty cellular data service, cellular network incompatibility or expensive roaming charges.

Just connect the Cordless 56K Modem to any analog phone line, connect wirelessly to your mobile computer with Bluetooth, and enjoy up to 328 ft (100 m) of wireless freedom, whether you're sitting outside on the patio or lying in bed. You can use it with almost any Bluetooth enabled mobile computer that supports a Dial-up Networking client. If your mobile computer doesn't have Bluetooth, it's easy to add with Socket's plug-in cards or USB adapter, available online at: www.socketcom.com/product/bluetooth.asp

A battery-powered version is available that features a rechargeable Lithium-ion battery that lasts for 3 hours of non-stop usage, so there's no need to bother with AC adapters or search for an electrical outlet each time you go online.

No special drivers or software installation is needed. Simply plug into an analog phone line, connect wirelessly to your mobile computer with Bluetooth, set up the dial-up connection, and start dialing into your network!

Optional Software for Windows Mobile

Socket includes three great software tools that are optional to install. The Modem Utilities let travelers program the modem for use in different countries. The Connection Setup Wizard makes it easy to set up dial-up connections.* There's also a tool to help you monitor your connection time.



socket
Increasing Mobile
Productivity

Cordless

FEATURES

- Compatible with a wide variety of Bluetooth enabled mobile computers, including those running:
 - Windows Mobile 5.0, 2003/2003SE
 - Windows CE 3.0 or greater
 - Windows XP, 2000, Me, 98SE
 - Windows XP Tablet Edition
 - Palm OS 5.2.1 or greater
 - Mac OS 10.2 or greater
- Compact and lightweight (3.2 oz.)
- Four LEDs indicate modem activity, Bluetooth connectivity, battery level, and battery charging activity
- Optional rechargeable Lithium-ion battery lasts for 3 hours of continuous use wherever AC power is not available
- Internal speaker
- Three Year Warranty

Bluetooth Features

- Bluetooth 1.1 certified, Class 1 with internal antenna
- Bluetooth Profiles supported: General Access, Service Discovery, Dial-up Networking, Serial Port, Fax

Modem Standards & Protocols Supported

- ITU-T V.90, 56K flex data modulation
- Hayes AT Commands
- Asynchronous and full-duplex
- Auto or manual answer, origination
- Standard error correction and data compression tools
- Auto-step downward compatibility for connection
- Fax transfer rate up to 14.4 kbps
- V.92 Hardware Ready

Optional Software for Windows Mobile

- Modem Utilities lets you program the modem for different countries and to adjust the speaker volume
- Connection Setup Wizard makes it easy to set up a dial-up connection*
- Applet shows connection time
- Software install is optional. No driver installation required
- Square screen, landscape mode support

* Connection Setup Wizard: No support for Windows Mobile 5.0

Socket Cordless 56K Modem

with Bluetooth® Wireless Technology

In the Box:

- Socket Cordless 56K Modem with Bluetooth Wireless Technology
- AC charger with international plugs for U.S., U.K., Europe, Australia
- Retractable RJ-11 cable
- Installation CD with optional software and user documentation
- Battery-powered version also includes rechargeable lithium-ion battery and nylon travel pouch



Items not shown to scale and may vary slightly from those shown.

SPECIFICATIONS

Physical Characteristics

L x W x H: 3.1 x 1.1 x 2.9 inches
(79 x 26.5 x 73 mm)
Weight: 3.2 oz. (91 g)

Power Consumption

Active: 160 mA (Modem)
200 mA (Bluetooth Transmitting)
Inactive: 20 mA (Bluetooth)
20 mA (Modem)

Battery capacity: 900 mA

Operating Temperature: 0 to +50° C

Storage Temperature: -20 to +90° C

Humidity: 10% to 90% non-condensing

Modem Characteristics

Data Modulation: ITU V.90, 56Kflex
ITU V.34, V.32bis, V.32, V.22bis, V.23

Bell 212A, Bell 103
V.22bis fast connect,
V.92 Hardware Ready

Error Correction: ITU V.42, MNP Lev. 2-4

Data Compression: ITU V 42 MNP Lev. 5

Fax Mode

ITU V.17, V.29, V.27ter
V.21 Channel-2
Class 1 Fax Command set

Line Requirement: PSTN
(Public Switched Telephone Network)

Receiver Sensitivity: 0-43 dBm

Dialing Methods: Tone and Pulse

Bluetooth Characteristics

Bluetooth Profiles:

Dial-up Network Fax
General Access Service Discovery
Serial Port

Protocol: Bluetooth 2.45 Ghz ISM band frequency hopping

Antenna: Integrated

Radio Range: Up to 328 ft (100 m), depending on environment

Connection: Point-to-point

Main Chip: CSR BlueCore 2

Security: Encrypted link

RF Power Output: 100 Milliwatt (Class 1)

Operating System Support

Any Bluetooth enabled device that supports DUN Client, such as those running:

- Windows Mobile 5.0, 2003/2003SE
- Windows CE 3.0 or greater
- Windows XP, 2000, Me, 98SE
- Windows XP Tablet Edition
- Palm 5.2.1 or greater
- Mac OS 10.2 or greater

Software Included:

Connection Setup Wizard, Modem Utilities

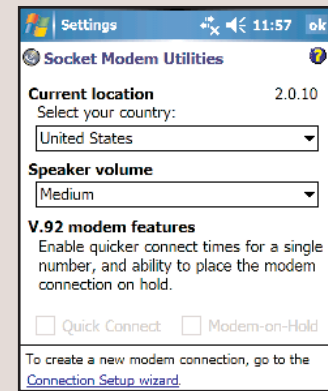
Certification/Compliance

FCC Part 15 and Part 68

Safety - ETL + ETLc

Industry Canada CE, CTR21, ETS

TELEC and JATE Bluetooth 1.1



Socket Modem Utilities for Windows Mobile allow you to program the modem for any country or adjust the speaker volume.

(V.92 support not included)

FOR ADDITIONAL INFORMATION

Website: www.socketcom.com

SKU#: Basic (No battery)
CM7104-616

With battery
CM7100-510

Sales Offices - Corporate Headquarters:
37400 Central Court, Newark, CA 94560

Phone: 510-744-2700

Domestic Toll Free: 800-552-3300

Fax: 510-744-2727

Online: www.socketcom.com/contact

